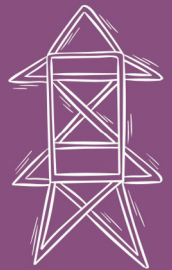
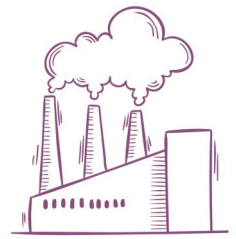
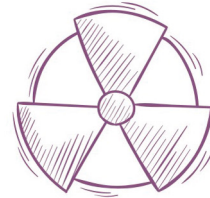
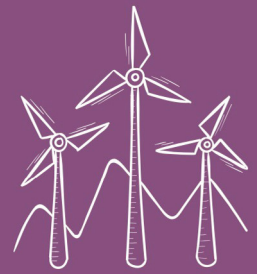
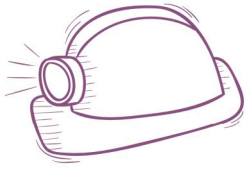


CABLE ACCESSORIES



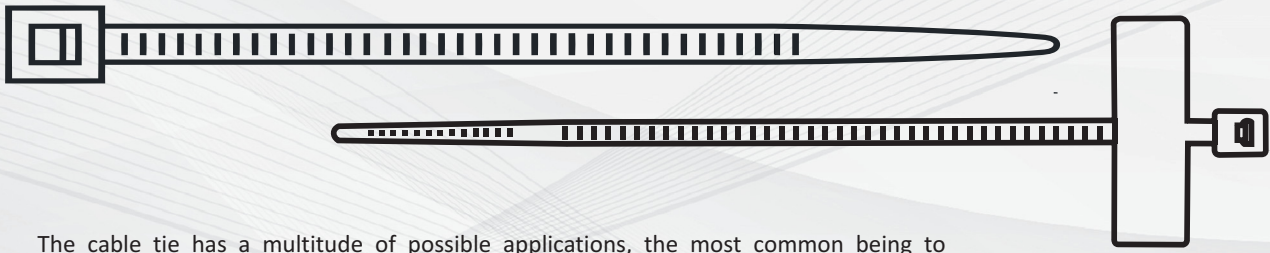
2018 - 2019
www.jigoindia.com



JiGO

POWER TO PERFORM

NYLON CABLE TIES



The cable tie has a multitude of possible applications, the most common being to organize cables. Computer cabling, electrical wires, home theater equipment, speaker wires, and power cables can be aesthetically improved and organized with the simple application of a cable tie. Cable ties are an extremely practical, affordable and convenient way to hold a lot of items that we use everyday together.

SPECIFICATION-

Material: Nylon 66, 94V-2 certified by UL. Heat-resisting, Acid & erosion control, insulate well and not apt to age.

Operating temperature: -35°C to 85°C

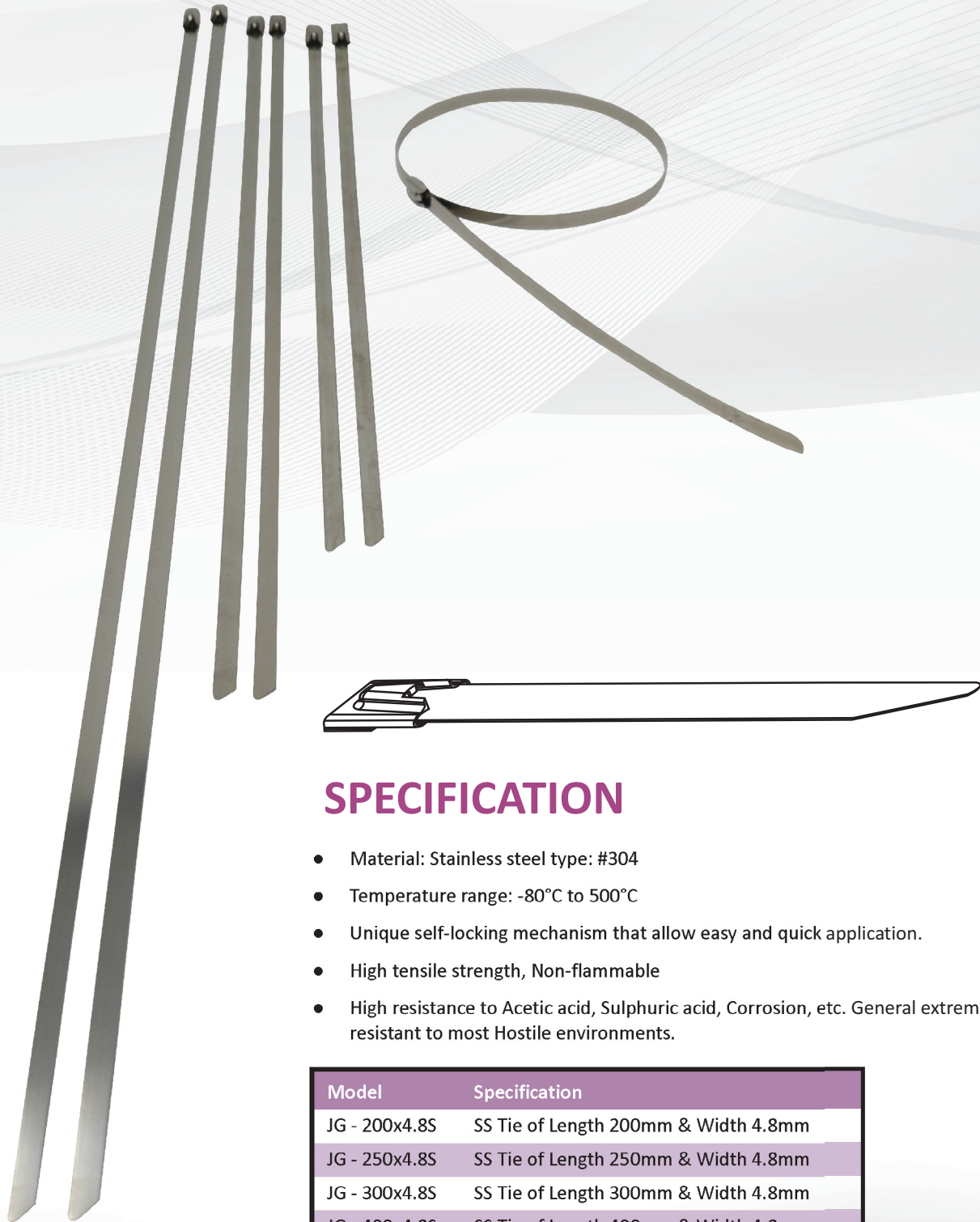
Color: Natural (or white, standard color), UV black and other colors are available as requested.



Model	Specification
JG - 100X2.5	Cable Tie of Length 100mm & Width 1.9mm
JG - 100X3	Cable Tie of Length 100mm & Width 2.5mm
JG - 150X2.5	Cable Tie of Length 150mm & Width 2.5mm
JG - 150X4	Cable Tie of Length 150mm & Width 3.2mm
JG - 200X3	Cable Tie of Length 200mm & Width 2.5mm
JG - 200X4	Cable Tie of Length 200mm & Width 3.5mm
JG - 250X4	Cable Tie of Length 250mm & Width 3.5mm
JG - 250X5	Cable Tie of Length 250mm & Width 5mm
JG - 300X4	Cable Tie of Length 300mm & Width 3.5mm
JG - 300X5	Cable Tie of Length 300mm & Width 5mm
JG - 300X7.6	Cable Tie of Length 300mm & Width 7.6mm
JG - 350X5	Cable Tie of Length 350mm & Width 5mm
JG - 400X5	Cable Tie of Length 400mm & Width 5mm
JG - 450X5	Cable Tie of Length 450mm & Width 5mm
JG - 450X8	Cable Tie of Length 450mm & Width 8mm
JG - 500X5	Cable Tie of Length 500mm & Width 5mm
JG - 500X8	Cable Tie of Length 500mm & Width 8mm
JG - 550X9	Cable Tie of Length 550mm & Width 9mm
JG - 650X9	Cable Tie of Length 650mm & Width 9mm
JG - 760X9	Cable Tie of Length 760mm & Width 9mm
JG - 920X9	Cable Tie of Length 920mm & Width 9mm
JG - 1020X9	Cable Tie of Length 1020mm & Width 9mm
JG - 100M	100 MM Marker Tie
JG - 200M	200 MM Marker Tie



STAINLESS STEEL CABLE TIES



SPECIFICATION

- Material: Stainless steel type: #304
- Temperature range: -80°C to 500°C
- Unique self-locking mechanism that allow easy and quick application.
- High tensile strength, Non-flammable
- High resistance to Acetic acid, Sulphuric acid, Corrosion, etc. General extremely resistant to most Hostile environments.

Model	Specification
JG - 200x4.8S	SS Tie of Length 200mm & Width 4.8mm
JG - 250x4.8S	SS Tie of Length 250mm & Width 4.8mm
JG - 300x4.8S	SS Tie of Length 300mm & Width 4.8mm
JG - 400x4.8S	SS Tie of Length 400mm & Width 4.8mm

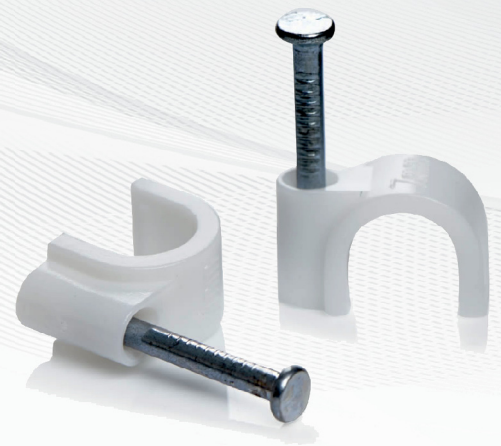


CABLE NAIL CLIP

Plastic PE Material: The color is white, protects your Cable Clips against non-toxic, impact and chemical resistance, moisture – proof. High Carbon Steel Nails: Sturdy and durable, shock resistance, not easy to bend, Anti oxidation, no rust, sharp nails and easily nail into the wall.

Nail-in Fastener: Fastening network cable, not easy to shake. (Each cable clip comes with integrated nails for mounting onto walls and various surfaces) Wide Compatibility: Use for indoor household, office electric wires, telephone lines, Network cables and computer cables.

Model	Specification
JG - 4MM	Plastic Circular Nail Clip of Diameter 4mm
JG - 5MM	Plastic Circular Nail Clip of Diameter 5mm
JG - 6MM	Plastic Circular Nail Clip of Diameter 6mm
JG - 7MM	Plastic Circular Nail Clip of Diameter 7mm
JG - 8MM	Plastic Circular Nail Clip of Diameter 8mm
JG - 9MM	Plastic Circular Nail Clip of Diameter 9mm
JG - 10MM	Plastic Circular Nail Clip of Diameter 10mm
JG - 12MM	Plastic Circular Nail Clip of Diameter 12mm
JG - 14MM	Plastic Circular Nail Clip of Diameter 14mm
JG - 16MM	Plastic Circular Nail Clip of Diameter 16mm
JG - 18MM	Plastic Circular Nail Clip of Diameter 18mm
JG - 20MM	Plastic Circular Nail Clip of Diameter 20mm 36GM
JG - 20MM	Plastic Circular Nail Clip of Diameter 20mm
JG - 25MM	Plastic Circular Nail Clip of Diameter 25mm 56GM
JG - 25MM	Plastic Circular Nail Clip of Diameter 25mm
JG - 20MM	Plastic Circular Nail Clip of Diameter 20mm Double nail
JG - 25MM	Plastic Circular Nail Clip of Diameter 25mm Double nail
JG - 32MM	Plastic Circular Nail Clip of Diameter 32mm Double nail
JG - 40MM	Plastic Circular Nail Clip of Diameter 40mm Double nail
JG - 50MM	Plastic Circular Nail Clip of Diameter 50mm Double nail
JG - BS (R)	BATTEN GATTY ROUND
JG - BS (S)	BATTEN GATTY SQUARE



CABLE TERMINAL ENDS

INSULATED CORD END TERMINALS

Item No.	F (mm)	L (mm)	W (mm)	D (mm)	C (mm)	Cable size (mm ²)	Insulating tube color
JG-E0508	8	14	2.6	1.3	1	0.5	Orange/White
JG-E0510	10	16	2.6	1.3	1	0.5	Orange/White
JG-E7508	8	14.4	2.8	1.5	1.2	0.75	Grey/Light Blue
JG-E7510	10	16.4	2.8	1.5	1.2	0.75	Grey/Light Blue
JG-E1008	8	14.4	3	1.7	1.4	1	Red
JG-E1010	10	16.4	3	1.7	1.4	1	Red
JG-E1508	8	14.4	3.5	2	1.7	1.5	Red/Black
JG-E1510	10	16.4	3.5	2	1.7	1.5	Red/Black
JG-E2508	8	15.2	4	2.6	2.3	2.5	Blue
JG-E2510	10	17.2	4	2.6	2.3	2.5	Blue
JG-E4009	9	16.5	4.4	3.2	2.8	4	Grey/Orange
JG-E4012	12	19.5	4.4	3.2	2.8	4	Grey/Orange
JG-E6010	10	18.5	6.3	3.9	3.5	6	Green
JG-E6012	12	20.5	6.3	3.9	3.5	6	Green
JG-E10-12	12	22.5	7.6	4.9	4.5	10	Brown
JG-E16-12	12	23.5	8.8	6.2	5.8	16	Ivory
JG-E25-22	22	34.5	11.2	7.9	7.5	25	Yellow
JG-E35-25	25	39.5	12.7	8.7	8.3	35	Brown
JG-E50-25	25	41	15.3	10.9	10.3	50	Brown



Material
Insulation : Nylon
Terminal Body : Copper
Plating : Tin



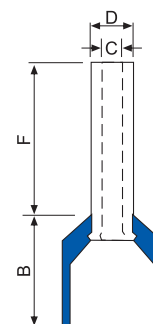
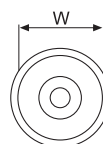
CABLE TERMINAL ENDS

INSULATED TWIN CORD END TERMINALS

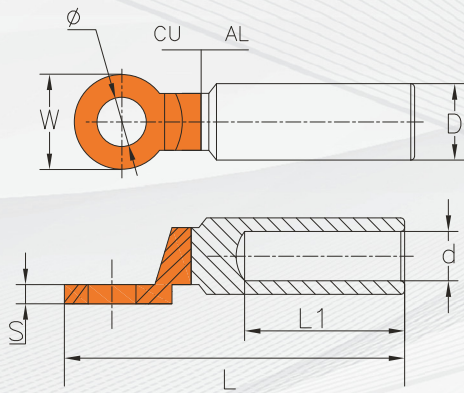
Item No.	F (mm)	L (mm)	W (mm)	B (mm)	D (mm)	C (mm)	Cable size (mm ²)	Insulating tube color
JG-TE0508	8	14.5	5	6.5	1.8	1.5	2×0.5	White
JG-TE7508	8	14.7	5.5	6.7	2.1	1.8	2×0.75	Blue
JG-TE1008	8	15.1	5.5	7.1	2.3	2	2×1.0	Red
JG-TE1508	8	15.5	6.4	7.5	2.6	2.3	2×1.5	Black
JG-TE2510	10	18.5	8	8.5	3.3	2.9	2×2.5	Grey
JG-TE4012	12	23.1	8.8	11.1	4.2	3.8	2×4	Orange
JG-TE6014	14	26.1	9.5	12.1	5.3	4.9	2×6	Green
JG-TE10-14	14	26.6	12.6	12.6	6.9	6.5	2×10	Brown
JG-TE16-14	14	31.3	19	17.3	8.7	8.3	2×16	Ivory



Material
Insulation : Nylon
Terminal Body : Copper
Plating : Tin



BI-METTALIC LUGS



FEATURES & TECHNICAL SPECIFICATION

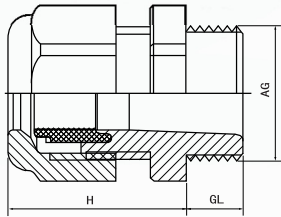
- Suitable for aluminum to copper terminations
- Aluminium barrel is filled by neutral grease and covered by cap
- Friction welded
- Material: CU 99.9%, AL 99.5%

Model No.	$\phi \pm 0.3$	$D \pm 0.2$	$d \pm 0.2$	$L \pm 2$	$L1 \pm 2$	$W \pm 0.2$	$S \pm 0.2$
JG-DTL-2-16	10.5	16	6.5	80	42	20	3.0
JG-DTL-2-25	10.5	16	7.5	80	42	20	3.0
JG-DTL-2-35	10.5	16	8.5	80	42	20	3.0
JG-DTL-2-50	12.8	20	9.8	90	43	25	4.5
JG-DTL-2-70	12.8	20	11.5	90	43	25	4.5
JG-DTL-2-95	12.8	20	13.5	90	43	25	4.5
JG-DTL-2-120	12.8	25	15.0	114	60	30	5.5
JG-DTL-2-150	12.8	25	16.5	114	60	30	5.5
JG-DTL-2-185	12.8	32	18.5	118	60	35	6.0
JG-DTL-2-240	12.8	32	21.5	118	60	35	6.0
JG-DTL-2-300	12.8	34	23.5	127	72	35	6.0
JG-DTL-2-400	17.0	40	26.0	160	93	36	7.0
JG-DTL-2-630	17.0	47	32.5	180	94	50	9.0



NYLON CABLE GLANDS

PG THREAD CABLE GLANDS



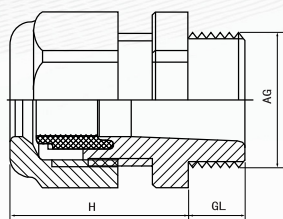
Material : Nylon(PA)
 Sealing Element :NBR
 Protection level : IP68
 Ambient temperature : static-40°C-100°C, short 120°C
 dynamic -20°C-80°C, short 120°C
 Colour : White Grey Black

Code	Model Thread	Cable Range	GL (mm)	H (mm)	Spanner Size A & E (mm)
JG 7	PG 7	3 ~ 6.5	8	21	15
JG 9	PG 9	4 ~ 8	8	22	19
JG 11	PG 11	5 ~ 10	8	25	22
JG 13.5	PG 13.5	6 ~ 12	9	27	24
JG 16	PG 16	10 ~ 14	10	28	27
JG 18	PG 18	12 ~ 16	11	29	27
JG 21	PG 21	13 ~ 18	11	31	33
JG 25	PG 25	14 ~ 21	12	32	36
JG 27	PG 27	15 ~ 23	12	33	38
JG 29	PG 29	18 ~ 25	11	39	42
JG 36	PG 36	22 ~ 32	13	48	53
JG 42	PG 42	32 ~ 38	13	48	60
JG 48	PG 48	37 ~ 44	14	49	65
JG 63	PG 63	40 ~ 50	29	95	75

NYLON CABLE GLANDS

M THREAD CABLE GLANDS

Code	Model Thread	Cable Range	GL (mm)	H (mm)	Spanner Size A & E (mm)
JG - M12	M 12x1.5	3 ~ 6.5	8	21	15
JG - M16	M 16x1.5	4 ~ 8	8	22	19
JG - M20	M 20x1.5	6 ~ 12	9	27	24
JG - M25	M 25x1.5	12 ~ 16	11	29	27
JG - M32	M 32x1.5	15 ~ 23	12	33	38
JG - M40	M 40x1.5	22 ~ 32	18	45	46
JG - M50	M 50x1.5	32 ~ 38	18	47	56
JG - M63	M 63x1.5	37 ~ 44	20	47	68



Material : Nylon(PA)
 Sealing Element :NBR
 Protection level : IP68
 Ambient temperature : static-40°C-100°C, short 120°C
 dynamic -20°C-80°C, short 120°C
 Colour : White Grey Black

MG THREAD CABLE GLANDS

Code	Model Thread	Cable Range	GL (mm)	Spanner Size A & E (mm)
JG - MG20	MG 20x1.5	14 ~ 8.5	15	27/27
JG - MG25	MG 25x1.5	18 ~ 12.5	15	33/33
JG - MG32	MG 32x1.5	25 ~ 18	15	41/41
JG - MG40	MG 40x1.5	32.5 ~ 24	15	50/50
JG - MG50	MG 50x1.5	41 ~ 30	20	62/62
JG - MG63	MG 63x1.5	54 ~ 40	20	75/75



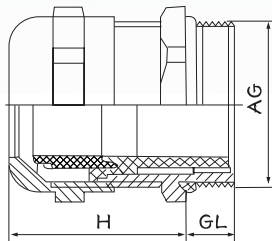
Thread Specification : Metric Teeth
 Material : Nylon PA66 (fire rating UL94V-2)
 Sealing Element :NBR
 Protection level : IP68
 Ambient temperature : static-40°C-100°C, short 120°C
 dynamic -20°C-80°C, short 120°C
 Colour : White Grey Black



METAL CABLE GLANDS

PG THREAD CABLE GLANDS

Code	Model Thread	Cable Range	GL (mm)	H (mm)	Spanner Size A & E (mm)
JG - PG7 (M)	PG 7	3 ~ 6.5	5	19	14
JG - PG9 (M)	PG 9	4 ~ 8	6	20	17
JG - PG11 (M)	PG 11	5 ~ 10	6	21	20
JG - PG13.5 (M)	PG 13.5	6 ~ 12	6.5	22	22
JG - PG16 (M)	PG 16	10 ~ 14	6.5	23	24
JG - PG21 (M)	PG 21	13 ~ 18	7	25	30
JG - PG29 (M)	PG 29	18 ~ 25	8	29	40
JG - PG36 (M)	PG 36	22 ~ 32	8	35	50
JG - PG42 (M)	PG 42	32 ~ 38	9	37	57



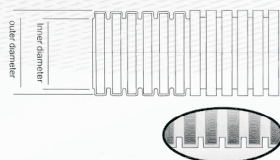
Material : Nickel-Plated Brass
Clamping member: nylon plastic (PA)
Seal : Nitrile Rubber (NBR)
O-ring : Nitrile Rubber (NBR)
Protection level : IP68
Ambient temperature : static-40°C-100°C, short 120°C



NYLON CABLE HOSE & GLAND

NYLON HOSE

Code	Specification for Flexible Pipe	ID x OD (mm)	Stat. R (mm)	Gland Ref
JG - AD10	AD10	1/4 "	6.5 x 10	PG 7
JG - AD13	AD13	5/16 "	10 x 13	PG 9
JG - AD15.8	AD15.8	3/8 "	12 x 15.8	PG 11
JG - AD18.5	AD18.5		14.3 x 18.5	PG13.5
JG - AD21.2	AD21.2	1/2 "	16.5 x 21.2	PG 16
JG - AD28.5	AD28.5	3/4 "	23 x 28.5	PG 21
JG - AD34.5	AD34.5	1 "	29 x 34.5	PG 29
JG - AD42.5	AD42.5	1 1/4 "	36 x 42.5	PG 36
JG - AD54.5	AD54.5	2 "	48 x 54.5	PG 48

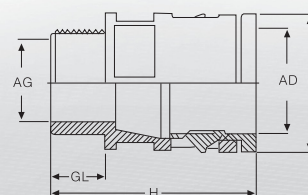


Material : Nylon
 Colour : Black
 Temperature: static-40°C-115°C, short 150°C
 Structure : Wavy (Internal + External)



NYLON HOSE GLAND

Model	Hose Specificaion	Gland Ref	GL (mm)	H (mm)	F (mm)
JG - RJ7	AD10	PG 7	10	34	17
JG - RJ9	AD13	PG 9	10	34	20
JG - RJ11	AD15.8	PG 11	10	32.5	20
JG - RJ13.5	AD18.5	PG13.5	11	40	26
JG - RJ16	AD21.2	PG 16	12	43.5	29.5
JG - RJ21	AD28.5	PG 21	13	46	37
JG - RJ29	AD34.5	PG 29	11	47	44
JG - RJ36	AD42.5	PG 36	13	50.5	51.5
JG - RJ48	AD54.5	PG 48	15	54	64

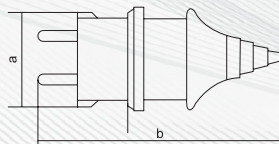


INDUSTRIAL PLUG & SOCKET

INDUSTRIAL PLUG



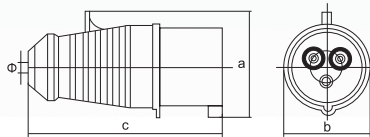
Application	Code	Normal Current	Normal Voltage	No.poles	Protection Degree
Plug	JG-012	16A	220-250V~	2P+E	IP44



Size(mm)	a	b	Cable nominal cross section area
Type			
JG-012	40	96	1-2.5mm ²



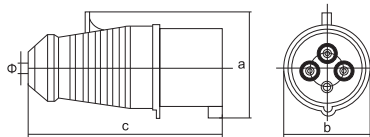
Application	Code	Normal Current	Earth contact Position	Normal Voltage	No.poles	Protection Degree
Plug	JG-013	16A	6h	220-250V~	2P+E	IP44
Plug	JG-023	32A	6h	220-250V~	2P+E	IP44



Size(mm)	a	b	c	Φ	Cable nominal cross section area
Type					
JG-013	59	51	122	6	1-2.5mm ²
JG-023	75	64	136	8	2.5-6mm ²



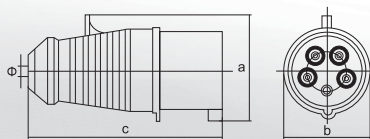
Application	Code	Normal Current	Earth contact Position	Normal Voltage	No.poles	Protection Degree
Plug	JG-014	16A	6h	380-415V~	3P+E	IP44
Plug	JG-024	32A	6h	380-415V~	3P+E	IP44



Size(mm)	a	b	c	Φ	Cable nominal cross section area
Type					
JG-014	65	55	122	6	1-2.5mm ²
JG-024	75	64	136	8	2.5-6mm ²



Application	Code	Normal Current	Earth contact Position	Normal Voltage	No.poles	Protection Degree
Plug	JG-015	16A	6h	220-380V~ 240-415V~	3P+N+E	IP44
Plug	JG-025	32A	6h	220-380V~ 240-415V~	3P+N+E	IP44

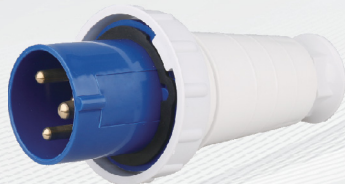
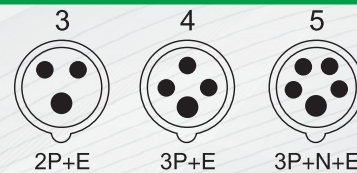


Size(mm)	a	b	c	Φ	Cable nominal cross section area
Type					
JG-015	72	64	130	8	1-2.5mm ²
JG-025	84	70	143	8	2.5-6mm ²

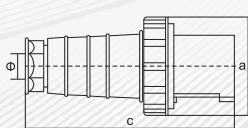


INDUSTRIAL PLUG & SOCKET

INDUSTRIAL PLUG



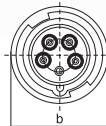
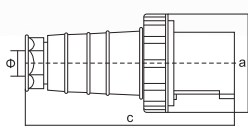
Application	Code	Normal Current	Earth contact Position	Normal Voltage	No.poles	Protection Degree
Plug	JG-033	63A	6h	220-250V~	2P+E	IP67
Plug	JG-043	125A	6h	220-250V~	2P+E	IP67



Size(mm)	a	b	c	Φ	Cable nominal cross section area
Type					
JG-033/043	108	108	230	16	6-16mm ²



Application	Code	Normal Current	Earth contact Position	Normal Voltage	No.poles	Protection Degree
Plug	JG-035	63A	6h	$\frac{220-380V}{240-415V}$ ~	3P+N+E	IP67
Plug	JG-045	125A	6h	$\frac{220-380V}{240-415V}$ ~	3P+N+E	IP67



Size(mm)	a	b	c	Φ	Cable nominal cross section area
Type					
JG-035/045	108	108	230	16	6-16mm ²

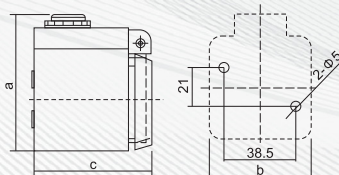


INDUSTRIAL PLUG & SOCKET

INDUSTRIAL WALL SOCKETS



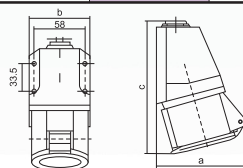
Application	Code	Normal Current	Normal Voltage	No.poles	Protection Degree
Socket	JG-112	16A	220-250V~	2P+E	IP44



Size(mm)	a	b	c	Cable nominal cross section area
JG-112	70	53	67	1-2.5mm ²



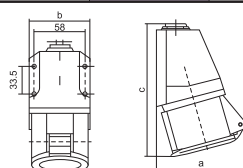
Application	Code	Normal Current	Earth contact Position	Normal Voltage	No.poles	Protection Degree
Socket	JG-113	16A	6h	220-250V~	2P+E	IP44
Socket	JG-123	32A	6h	220-250V~	2P+E	IP44



Size(mm)	a	b	c	Cable nominal cross section area
JG-113	90	71	135	1-2.5mm ²
JG-123	100	71	151	2.5-6mm ²



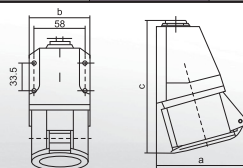
Application	Code	Normal Current	Earth contact Position	Normal Voltage	No.poles	Protection Degree
Socket	JG-114	16A	6h	380-415V~	3P+E	IP44
Socket	JG-124	32A	6h	380-415V~	3P+E	IP44



Size(mm)	a	b	c	Cable nominal cross section area
JG-114	92	71	140	1-2.5mm ²
JG-124	102	71	151	2.5-6mm ²



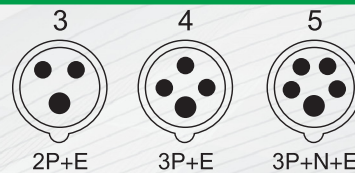
Application	Code	Normal Current	Earth contact Position	Normal Voltage	No.poles	Protection Degree
Socket	JG-115	16A	6h	220-380V~ 240-415V~	3P+N+E	IP44
Socket	JG-125	32A	6h	220-380V~ 240-415V~	3P+N+E	IP44



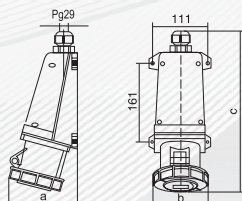
Size(mm)	a	b	c	Cable nominal cross section area
JG-115	100	71	131	1-2.5mm ²
JG-125	109	71	152	2.5-6mm ²

INDUSTRIAL PLUG & SOCKET

INDUSTRIAL WALL SOCKETS



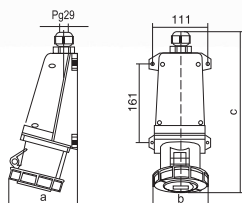
Application	Code	Normal Current	Earth contact Position	Normal Voltage	No.poles	Protection Degree
Socket	JG-133	63A	6h	220-250V~	2P+E	IP67
Socket	JG-143	125A	6h	220-250V~	2P+E	IP67



Size(mm)	a	b	c	Cable nominal cross section area
Type				
JG-133/143	133	108	310	6-25mm ²



Application	Code	Normal Current	Earth contact Position	Normal Voltage	No.poles	Protection Degree
Socket	JG-135	63A	6h	220-380V~ 240-415V~	3P+N+E	IP67
Socket	JG-145	125A	6h	220-380V~ 240-415V~	3P+N+E	IP67



Size(mm)	a	b	c	Cable nominal cross section area
Type				
JG-135/145	133	108	310	6-25mm ²

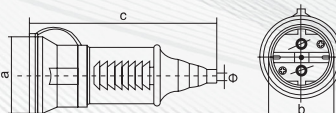


INDUSTRIAL PLUG & SOCKET

INDUSTRIAL STRAIGHT SOCKETS



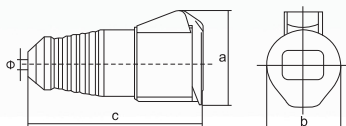
Application	Code	Normal Current	Normal Voltage	No.poles	Protection Degree
Coupler	JG-212	16A	220-250V~	2P+E	IP44



Size(mm)	a	b	c	Cable nominal cross section area
Type				
JG-212	72	48	123	1-2.5mm ²



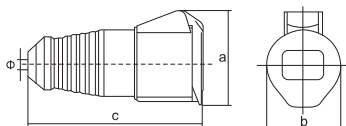
Application	Code	Normal Current	Earth contact Position	Normal Voltage	No.poles	Protection Degree
Coupler	JG-213	16A	6h	220-250V~	2P+E	IP44
Coupler	JG-223	32A	6h	220-250V~	2P+E	IP44



Size(mm)	a	b	c	Φ	Cable nominal cross section area
Type					
JG-213	72	51	132	6	1-2.5mm ²
JG-223	92	64	146	8	2.5-6mm ²



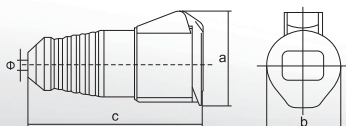
Application	Code	Normal Current	Earth contact Position	Normal Voltage	No.poles	Protection Degree
Coupler	JG-214	16A	6h	380-415V~	3P+E	IP44
Coupler	JG-224	32A	6h	380-415V~	3P+E	IP44



Size(mm)	a	b	c	Φ	Cable nominal cross section area
Type					
JG-214	78	55	132	6	1-2.5mm ²
JG-224	92	64	146	8	2.5-6mm ²



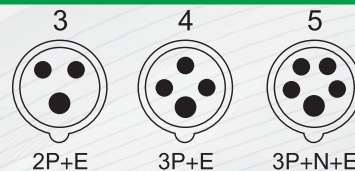
Application	Code	Normal Current	Earth contact Position	Normal Voltage	No.poles	Protection Degree
Coupler	JG-215	16A	6h	220-380V~ 240-415V~	3P+N+E	IP44
Coupler	JG-225	32A	6h	220-380V~ 240-415V~	3P+N+E	IP44



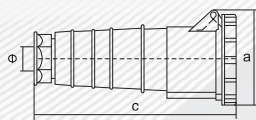
Size(mm)	a	b	c	Φ	Cable nominal cross section area
Type					
JG-215	92	63	139	6	1-2.5mm ²
JG-225	101	70	154	8	2.5-6mm ²

INDUSTRIAL PLUG & SOCKET

INDUSTRIAL STRAIGHT SOCKETS



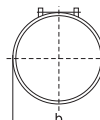
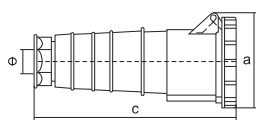
Application	Code	Normal Current	Earth contact Position	Normal Voltage	No.poles	Protection Degree
Coupler	JG-233	63A	6h	220-250V~	2P+E	IP67
Coupler	JG-243	125A	6h	220-250V~	2P+E	IP67



Size(mm)	a	b	c	Cable nominal cross section area
Type				
JG-233/243	116	108	245	6-16mm ²



Application	Code	Normal Current	Earth contact Position	Normal Voltage	No.poles	Protection Degree
Coupler	JG-235	63A	6h	220-380V~ 240-415V~	3P+N+E	IP67
Coupler	JG-245	125A	6h	220-380V~ 240-415V~	3P+N+E	IP67



Size(mm)	a	b	c	Cable nominal cross section area
Type				
JG-235/245	116	108	245	6-16mm ²

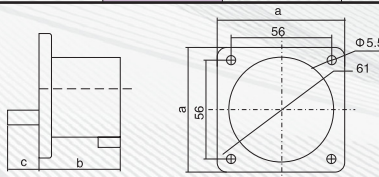


INDUSTRIAL PLUG & SOCKET

INDUSTRIAL REV PLUG



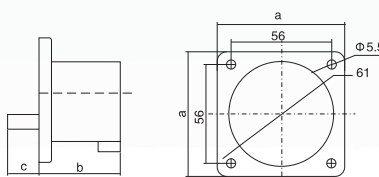
Application	Code	Normal Current	Earth contact Position	Normal Voltage	No.poles	Protection Degree
Plug	JG-613	16A	6h	220-250V~	2P+E	IP44
Plug	JG-623	32A	6h	220-250V~	2P+E	IP44



Size(mm)	a	b	c	Cable nominal cross section area
JG-613	70	41	24	1-2.5mm ²
JG-623	70	50	28	2.5-6mm ²



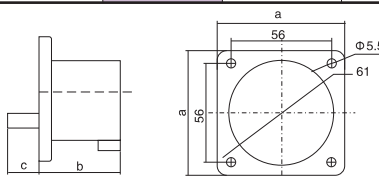
Application	Code	Normal Current	Earth contact Position	Normal Voltage	No.poles	Protection Degree
Plug	JG-614	16A	6h	380-415V~	3P+E	IP44



Size(mm)	a	b	c	Cable nominal cross section area
JG-614	70	41	24	1-2.5mm ²



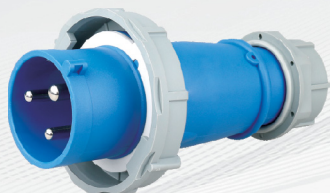
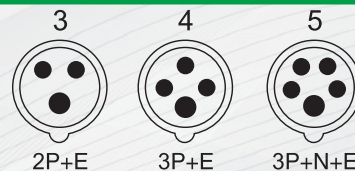
Application	Code	Normal Current	Earth contact Position	Normal Voltage	No.poles	Protection Degree
Plug	JG-615	16A	6h	220-380V~ 240-415V~	3P+N+E	IP44
Plug	JG-625	32A	6h	220-380V~ 240-415V~	3P+N+E	IP44



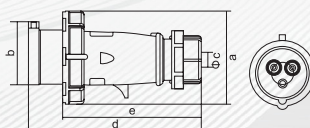
Size(mm)	a	b	c	Cable nominal cross section area
JG-615	70	41	24	1-2.5mm ²
JG-625	70	51	29	2.5-6mm ²

INDUSTRIAL PLUG & SOCKET

INDUSTRIAL PLUG IP 67



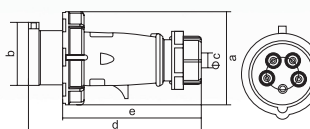
Application	Code	Normal Current	Earth contact Position	Normal Voltage	No.poles	Protection Degree
Plug	JG-0132	16A	6h	220-250V~	2P+E	IP67
Plug	JG-0232	32A	6h	220-250V~	2P+E	IP67



Size(mm) Type	Size(mm)					Cable nominal cross section area
	a	b	Φc	d	e	
JG-0132	75.5	47	7-15	139	112	1-2.5mm ²
JG-0232	99	63	10-20	175	130	2.5-6mm ²



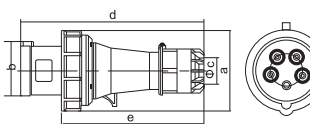
Application	Code	Normal Current	Earth contact Position	Normal Voltage	No.poles	Protection Degree
Plug	JG-0152	16A	6h	$\frac{220-380V\sim}{240-415V\sim}$	3P+N+E	IP67
Plug	JG-0252	32A	6h	$\frac{220-380V\sim}{240-415V\sim}$	3P+N+E	IP67



Size(mm) Type	Size(mm)					Cable nominal cross section area
	a	b	Φc	d	e	
JG-0152	92	60	8-16	139	95	1-2.5mm ²
JG-0252	107	70	12-22	170	124	2.5-6mm ²



Application	Code	Normal Current	Earth contact Position	Normal Voltage	No.poles	Protection Degree
Plug	JG-0352	63A	6h	$\frac{220-380V\sim}{240-415V\sim}$	3P+N+E	IP67

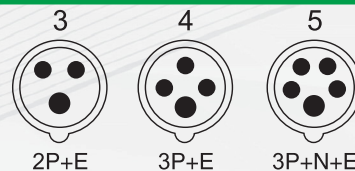


Size(mm) Type	Size(mm)					Cable nominal cross section area
	a	b	Φc	d	e	
JG-0352	116	75	37	251	187	6-16mm ²

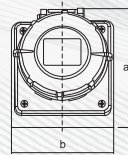
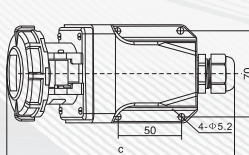


INDUSTRIAL PLUG & SOCKET

INDUSTRIAL WALL SOCKET IP 67



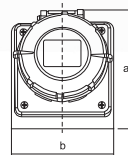
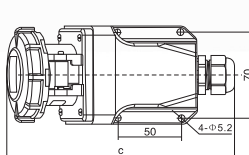
Application	Code	Normal Current	Earth contact Position	Normal Voltage	No.poles	Protection Degree
Socket	JG-1132	16A	6h	220-250V~	2P+E	IP67
Socket	JG-1232	32A	6h	220-250V~	2P+E	IP67



Type	Size(mm)			Cable nominal cross section area
	a	b	c	
JG-1132	95	75	193	1-2.5mm ²
JG-1232	105	75	203	2.5-6mm ²



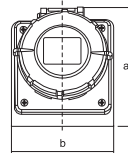
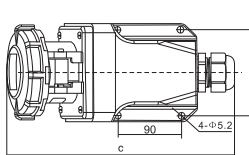
Application	Code	Normal Current	Earth contact Position	Normal Voltage	No.poles	Protection Degree
Socket	JG-1152	16A	6h	$\frac{220-380V}{240-415V}$ ~	3P+N+E	IP67
Socket	JG-1252	32A	6h	$\frac{220-380V}{240-415V}$ ~	3P+N+E	IP67



Type	Size(mm)			Cable nominal cross section area
	a	b	c	
JG-1152	100	75	185	1-2.5mm ²
JG-1252	105	75	200	2.5-6mm ²



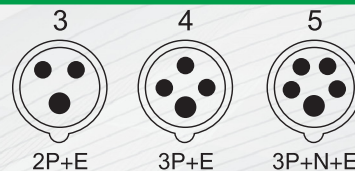
Application	Code	Normal Current	Earth contact Position	Normal Voltage	No.poles	Protection Degree
Socket	JG-1352	63A	6h	$\frac{220-380V}{240-415V}$ ~	3P+N+E	IP67



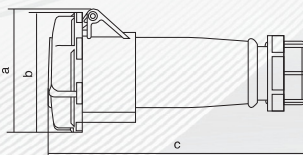
Type	Size(mm)			Cable nominal cross section area
	a	b	c	
JG-1352	130	105	275	10-16mm ²

INDUSTRIAL PLUG & SOCKET

INDUSTRIAL STRAIGHT SOCKET IP 67



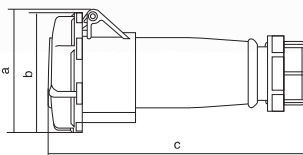
Application	Code	Normal Current	Earth contact Position	Normal Voltage	No.poles	Protection Degree
Coupler	JG-2132	16A	6h	220-250V~	2P+E	IP67
Coupler	JG-2232	32A	6h	220-250V~	2P+E	IP67



Size(mm) Type	a	b	c	Cable nominal cross section area
	JG-2132	79	77	
JG-2232	102	102	205	2.5-6mm ²



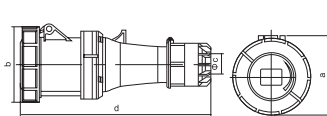
Application	Code	Normal Current	Earth contact Position	Normal Voltage	No.poles	Protection Degree
Coupler	JG-2152	16A	6h	220-380V~ 240-415V~	3P+N+E	IP67
Coupler	JG-2252	32A	6h	220-380V~ 240-415V~	3P+N+E	IP67



Size(mm) Type	a	b	c	Cable nominal cross section area
	JG-2152	97	90	
JG-2252	109	103	210	2.5-6mm ²



Application	Code	Normal Current	Earth contact Position	Normal Voltage	No.poles	Protection Degree
Coupler	JG-2352	63A	6h	220-380V~ 240-415V~	3P+N+E	IP67

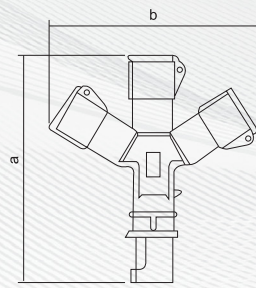
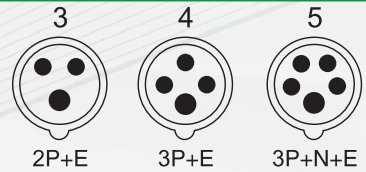


Size(mm) Type	a	b	c	d	Cable nominal cross section area
	JG-2352	114	117	37	

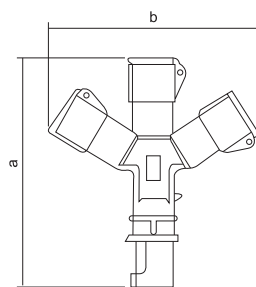


INDUSTRIAL PLUG & SOCKET

MULTI-FUNCTION PLUG & SOCKET CONNECTOR



Code	Normal Current	Earth Contact Position	Normal Voltage	No.poles	Protection Degree	Size(mm)	
						a	b
JG-1013	16A	6h	220-240V~	2P+E	IP44	223	220
JG-1023	32A	6h	220-240V~	2P+E	IP44	318	305



Code	Normal Current	Earth Contact Position	Normal Voltage	No.poles	Protection Degree	Size(mm)	
						a	b
JG-1015	16A	6h	220-380V~ 240-415V~	3P+N+E	IP44	305	295

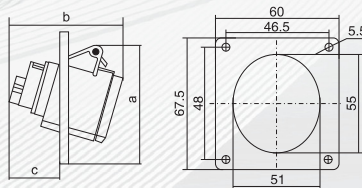


INDUSTRIAL PLUG & SOCKET

ANGULAR PLUG & SOCKET



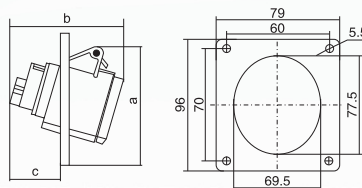
Application	Code	Normal Current	Earth contact Position	Normal Voltage	No.poles	Protection Degree
Socket	JG-413	16A	6h	220-250V~	2P+E	IP44



Size(mm)	a	b	c	Cable nominal cross section area
Type				
ZZ-413	74	72	45	1-2.5mm ²



Application	Code	Normal Current	Earth contact Position	Normal Voltage	No.poles	Protection Degree
Socket	JG-425	32A	6h	220-380V~ 240-415V~	3P+N+E	IP44

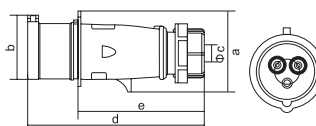


Size(mm)	a	b	c	Cable nominal cross section area
Type				
ZZ-425	102	95	51	2.5-6mm ²

3RD GENERATION INDUSTRIAL PLUG



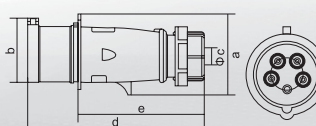
Application	Code	Normal Current	Earth contact Position	Normal Voltage	No.poles	Protection Degree
Plug	JG-013X	16A	6h	220-250V~	2P+E	IP44
Plug	JG-023X	32A	6h	220-250V~	2P+E	IP44



Size(mm)	a	b	Φc	d	e	Cable nominal cross section area
Type						
JG-013X	58	47	7-15	135	104	1-2.5mm ²
JG-023X	80.7	63	10-20	171	130	2.5-6mm ²



Application	Code	Normal Current	Earth contact Position	Normal Voltage	No.poles	Protection Degree
Plug	JG-015X	16A	6h	220-380V~ 240-415V~	3P+N+E	IP44
Plug	JG-025X	32A	6h	220-380V~ 240-415V~	3P+N+E	IP44



Size(mm)	a	b	Φc	d	e	Cable nominal cross section area
Type						
JG-015X	75	60	8-16	145	112	1-2.5mm ²
JG-025X	89	70	12-22	178	132	2.5-6mm ²

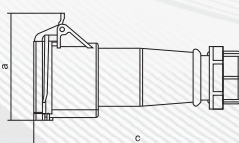


INDUSTRIAL PLUG & SOCKET

3RD GENERATION INDUSTRIAL STRAIGHT SOCKET



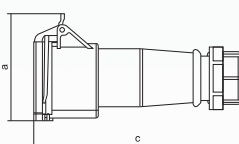
Application	Code	Normal Current	Earth contact Position	Normal Voltage	No.poles	Protection Degree
Coupler	JG-213X	16A	6h	220-250V~	2P+E	IP44
Coupler	JG-223X	32A	6h	220-250V~	2P+E	IP44



Size(mm)		a	b	c	Cable nominal cross section area
Type					
JG-213X		83	60	155	1-2.5mm ²
JG-223X		102	82.5	195	2.5-6mm ²

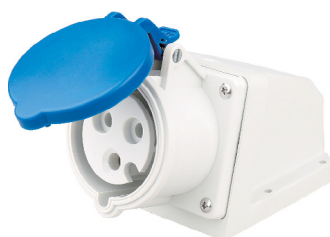


Application	Code	Normal Current	Earth contact Position	Normal Voltage	No.poles	Protection Degree
Coupler	JG-215X	16A	6h	220-380V~ 240-415V~	3P+N+E	IP44
Coupler	JG-225X	32A	6h	220-380V~ 240-415V~	3P+N+E	IP44

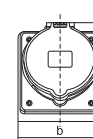
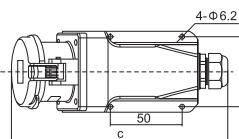


Size(mm)		a	b	c	Cable nominal cross section area
Type					
JG-215X		100	76	160	1-2.5mm ²
JG-225X		110	90	200	2.5-6mm ²

3RD GENERATION INDUSTRIAL WALL SOCKET



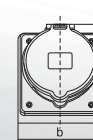
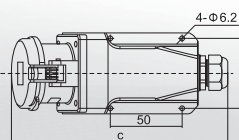
Apellation	Code	Normal Current	Earth contact Position	Normal Voltage	No.poles	Protection Degree
Socket	JG-113X	16A	6h	220-250V~	2P+E	IP44
Socket	JG-123X	32A	6h	220-250V~	2P+E	IP44



Size(mm)		a	b	c	Cable nominal cross section area
Type					
JG-113X		104	80	181	1-2.5mm ²
JG-123X		114	80	192	2.5-6mm ²



Apellation	Code	Normal Current	Earth contact Position	Normal Voltage	No.poles	Protection Degree
Socket	JG-115X	16A	6h	220-380V~ 240-415V~	3P+N+E	IP44
Socket	JG-125X	32A	6h	220-380V~ 240-415V~	3P+N+E	IP44



Size(mm)		a	b	c	Cable nominal cross section area
Type					
JG-115X		110	80	181	1-2.5mm ²
JG-125X		114	80	192	2.5-6mm ²

JUNCTION BOX

IP65 - ABS JUNCTION BOX

Model	Specification
JG - JB 100	ABS Junction Box - 100X100X70
JG - JB 150110	ABS Junction Box - 150X110X70
JG - JB 150	ABS Junction Box - 150X150X70
JG - JB 200	ABS Junction Box - 200X155X80
JG - JB 255	ABS Junction Box - 255X200X80
JG - JB 300	ABS Junction Box - 300X250X120
JG - JB 400	ABS Junction Box - 400X350X120



IP67 - POLYCARBONATE JUNCTION BOX

WITHOUT TERMINAL

Model	Specification
JG - JB 9020Z	Polycarbonate Junction Box - 88X88X53
JG - JB 9040Z	Polycarbonate Junction Box - 98X98X61
JG - JB 9060Z	Polycarbonate Junction Box - 139X119X70
JG - JB 9100Z	Polycarbonate Junction Box - 167X125X82
JG - JB 9250Z	Polycarbonate Junction Box - 200X160X98



WITH TERMINAL

Model	Specification
JG - JB 9025Z	PC Junction Box with Terminal - 88X88X53
JG - JB 9045Z	PC Junction Box with Terminal - 98X98X61
JG - JB 9065Z	PC Junction Box with Terminal - 139X119X70
JG - JB 9105Z	PC Junction Box with Terminal - 167X125X82
JG - JB 9255Z	PC Junction Box with Terminal - 200X160X98



WATERPROOF BOX WITH PLUG & SOCKET

Model	Specification
JG-1801	16A 3 Pin 3 Socket With 4 Modular Mcb Channel
JG-1802	16A 3 Pin 3 Socket With One Plug and 4 Modular Mcb Channel
JG-413	16A 3 Pin 4 Socket With One Plug and 12 Modular Mcb Channel
JG-ZH1601	16A 3 Pin 2 Socket and 32 A 5 Pin 1 Socket 10 Modular Mcb Channel
JG-ZH1602	16A 3 Pin 1 Socket and 32 A 5 Pin 2 Socket 10 Modular Mcb Channel
JG-ZH1603	16A 3 Pin 3 Socket ,32 A 5 Pin 1 Socket and With Emergency 10 Modular Mcb Channel
JG-DZ18-PLA	Switch and socket box with 3M cable



JG-ZH1601



JG-ZH1602



JG-413



JG-1801



JG-DZ18-PLA



JG-1802



JG-ZH1603

MECHANICAL INTERLOCK SOCKET WITH SWITCH

Model	Specification
JG-7274	16A 3 Pin Socket
JG-7276	15A 5 Pin Socket
JG-7012	16A 3 Pin
JG-5103	16 A 3 Pin
JG-5108	32 A 5 Pin
JG-5956	63 A 3 Pin



DISTRIBUTION BOX

HT SERIES - DISTRIBUTION BOX

Panel is the ABS material for the engineering, high strength, never change color, the transparent material is PC.

Cover push-type opening and closing

Face covering of the distribution box adopts the push-type opening and closing mode, the face mask can be opened by pressing lightly, the self-locking positioning hinge structure is provided when opening.

Wiring design of the power distribution box

The guide rail support plate can be lifted to the highest movable point, it is no longer limited by the narrow space when installing the wire. To install easily, the switch of the distribution box is set up with the wire groove and wire pipe exit-holes, which are easy to use for a variety of wire grooves and wire pipes.



Model	Dimensions		
	L(mm)	W (mm)	H (mm)
JG-HT-2P	57	124	70
JG-HT-5P	119	159	90
JG-HT-12P	255	198	108
JG-HT-18P	363	198	108
JG-HT-24P	363	280	108

56CB SERIES MCB BOX

Model	Specification
JG-56CB4N	4 Way Mcb Box With Indicator
JG-56CB8N	8 Way Mcb Box With Indicator
JG-56CB4N A	4 Way Mcb Box With Indicator and 15A 3 Pin Socket
JG-56CB8N A	8 Way Mcb Box With Indicator and 32A 5 Pin Socket

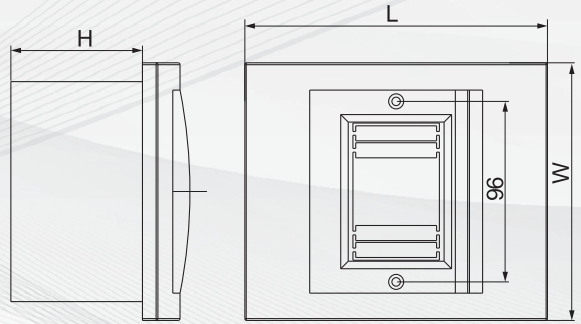


DISTRIBUTION BOX

SH SERIES - MCB DISTRIBUTION BOX

Features

- Humanized circuitry symbols, printed display of control circuit breaker, clear and elegant.
- The guide-rail shoe plate has round hole, it is able to regulate the cover of distribution box to level position.
- The distribution box is able to regulate the height automatically within a certain range from the outer wall.



Concealed mounted

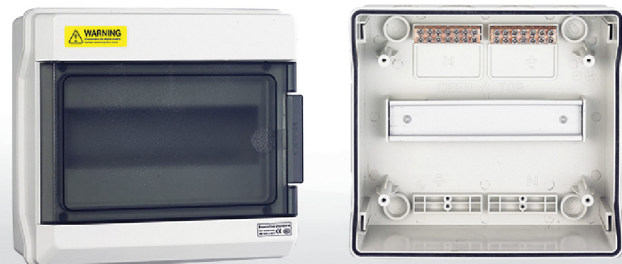
Model	Dimensions		
	L (mm)	W (mm)	H (mm)
JG-SH-2-4	137	161	82
JG-SH-4-6	208	208	95
JG-SH-7-9	261	208	95
JG-SH-10-13	334	208	95



SH NEW SERIES - MCB DISTRIBUTION BOX

Product Name	Waterproof Distribution Board
Cover Material	Plastic(ABS,PS)
Color	White /Clear/Grey/Customized
Application	indoor
Rated Voltage	220V-380V

Model	Dimensions		
	L (mm)	W (mm)	H (mm)
JG-SHP4N	107	212	92
JG-SHP6N	165	200	100
JG-SHP12N	273	230	110
JG-SHP18N	381	230	110
JG-SHP24N	273	380	110



DISTRIBUTION BOX

WATERPROOF SWITCHES & SOCKETS

Model	Specification
JG-1WAY	1 Way Switch IP65
JG-1WAY	1 Way Socket IP65
JG-2 WAY	1 Way Switch With Socket IP65
JG-2 BELL	1 Way Bell Push



INDUSTRIAL CABLE DRUM

Model	Specification
JG-QC2630	Industrial plastic cable reel QC2630 with 16A plug, there two socket and two plug
JG-QC2630	Industrial plastic cable reel QC2630 with 32A plug there two socket and two plug
JG-QC8630A	Industrial empty metal cable reel QC8630A with 16A plug theretwo socket and two plug
JG-QC8230A	Metal cable reel QC8230A wit25mtr H05VV-F 3*1.5sqm pure copper cable
JG-QC8250A	Metal cable reel QC8250A wit 50mtr.H05VV-F 3*1.5sqm pure copper cable
JG-QC8130A	Metal cable reel QC8130Awith 25mtr.H05VV-F 3*1.5sqm pure copper cable
JG-QC8150A	Metal cable reel QC8150A with50mt. H05VV-F 3*1.5sqm pure copper cable
JG-QC3130A-1	Metal cable reel QC3130A-1 with 25m H05VV-F 3*1.5sqm pure copper cable
JG-QC2130-S0	Plastic cable reel QC2130-S0 with 25m H05VV-F 3*1.5sqm pure copper cable
JG-QC2150-S0	Plastic cable reel QC2150-S0 with 50m H05VV-F 3*1.5sqm pure copper cable
JG-QC9130-0R	Plastic cable reel QC9130-0R with 25m H05VV-F 3*1.5sqm pure copper cable
JG-QC9150-0R	Plastic cable reel QC9150-0R with 50m H05VV-F 3*1.5sqm pure copper cable
JG-QC8640A	Industrial empty metal cable reel QC8640A with 32A there two socket and two plug

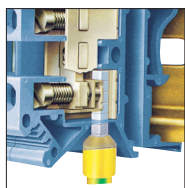


CRIMPING TOOLS - INSULATED TERMINAL

JG-HSC8 6-4

- Self-adjusts to the desired ferrule size
- Ferrule insertion on the side of the tool
- Multiple crimp profiles
- Burnished or chrome finish
- Specially hardened spring steel

Specification	JG-HSC8 6-4
Crimping capacity	0.25-6.0mm ²
AWG	23-10AWG
Length	175mm
Weight	0.36Kg



JG-HSC8 6-6

Specification	JG-HSC8 6-6
Crimping capacity	0.25-6.0mm ²
AWG	23-10AWG
Length	175mm
Weight	0.36Kg

- Ferrule insertion on the side of the tool
- Self-adjusting adaptation to the desired end sleeve (ferrule) size, no wrong crimps caused by using the wrong die
- Fits all ferrules within the application range
- Chrome vanadium electric steel in special quality, oil-hardened



JG-HS-06WF

Specification	JG-HS-06WF
Crimping capacity	0.25-6.0mm ²
AWG	24-10AWG
Length	203mm
Weight	0.4Kg



JG-HS-16WF

Specification	JG-HS-16WF
Crimping capacity	6.0-16.0mm ²
AWG	10-6AWG
Length	203mm
Weight	0.4Kg

CRIMPING TOOLS - NON-INSULATED TERMINAL

JG-HS-16

Specification	JG-HS-16
Crimping capacity	1.25-16 mm ²
AWG	17-5 AWG
Length	270mm
Weight	0.55Kg



JG-HS-25

Specification	JG-HS-25
Crimping capacity	5.5-25 mm ²
AWG	AWG
Length	354 mm
Weight	0.85 Kg

JG-HS-38

Specification	JG-HS-38
Crimping capacity	5.5-38mm ²
AWG	10-2AWG
Length	356mm
Weight	0.85Kg



Releasing device ensure safe operation



CRIMPING TOOLS - FOR CABLE LUGS

- The crimping tools is used for non-welding and standard electrical connection.
- The mould of the crimping dies is made of SCM-40 hardest tool steel. It is with the characteristics of long life, accurate bore diameter and good crimping effect.



Item No.	Range of Application	Crimping Capacity		Length(mm)	Weight(kg)
		mm ²	AWG		
JG-HX-50B	BS Standard type terminals	6-50	10-1	390	1.3kg
JG-HX-120B	BS Standard type terminals	10-120	8-4/0	620	4.0kg
JG-HX-150B	BS Standard type terminals	25-150	4-300MCM	620	4.0kg
JG-HX-245B	BS Standard type terminals	70-240	2/0	980	5.6kg

CRIMPING TOOLS - FOR CABLE LUGS

JG-YQK300

- It is applied to overhead distribution and press connection for copper terminals and sleeve of underground cable.
- Hexagonal mould is adopted to ensure tight press connection, good electric conduction and non-easy shedding.

Range of application	10-185mm ² (Al Terminal) 16-300mm ² (Cu Terminal)
Crimping force	8ton
Stroke	16mm
Standard	16,25,35,50,70,95,120,150,185,240,300mm ²
Weight	6.4Kg
Packaging Size	755x130x230mm
Package	Plastic case



JG-FYQ-400

Range of application	50-400mm ²
Crimping force	16ton
Stroke	20mm
Standard	50,70,95,120,150,185,240,300 400mm ²
Weight	9Kg
Packaging Size	355x90x155mm
Package	Steel case



HEAVY DUTY CONNECTOR

SPECIFICATIONS

Model : JG-HE-06-64

Current : 16A

Voltage : 500V

Connector Pin Number : 6,10, 16, 24, 32, 48, 63

Connect a Pin Material : Copper

Surface Treatment : Silver Plating

Contact Resistance : 1m or Ω

Wiring Form : Screw Link

Wire Specification : 0.5~4mm²

Screw Torque: 0.5 NM

Wire Stripping Length : 7-9mm

Plug Number : 500 or higher

Working Temperature : -40°C to +125°C

Shell Materials : Die casting aluminum alloy

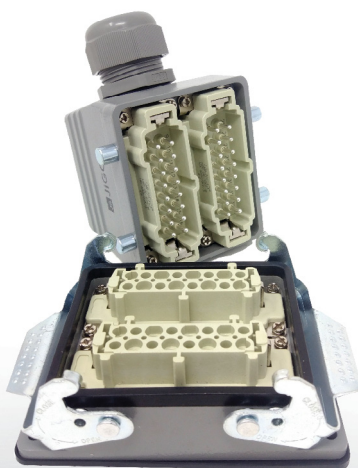
Color : Grey

Chain Mode : metal roller, double buckle

The Shell Surface: High temperature power coating

The Original Seal: nitrile rubber

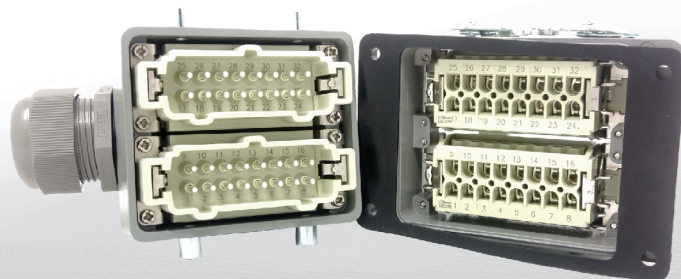
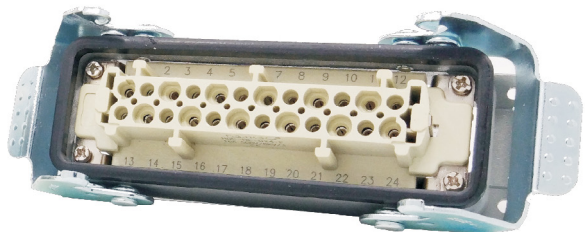
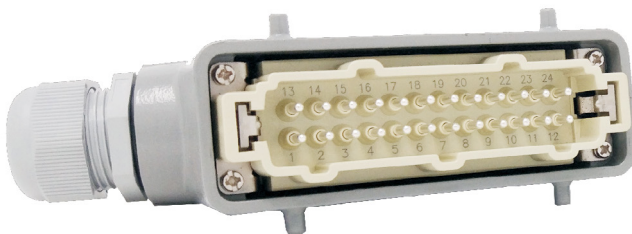
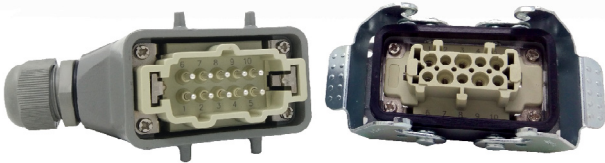
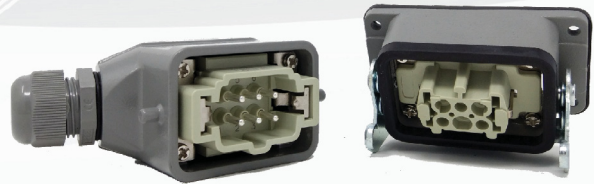
Protection Grade : IP65



HEAVY DUTY CONNECTOR

BOTTOM OPEN TYPE

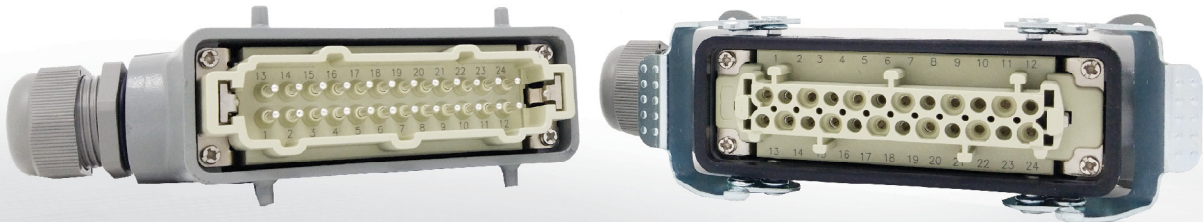
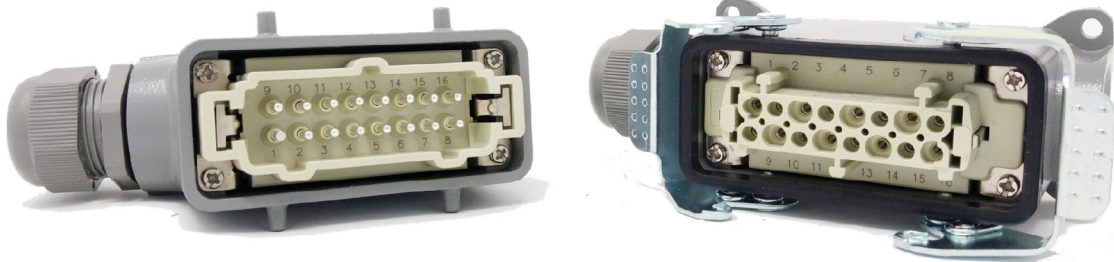
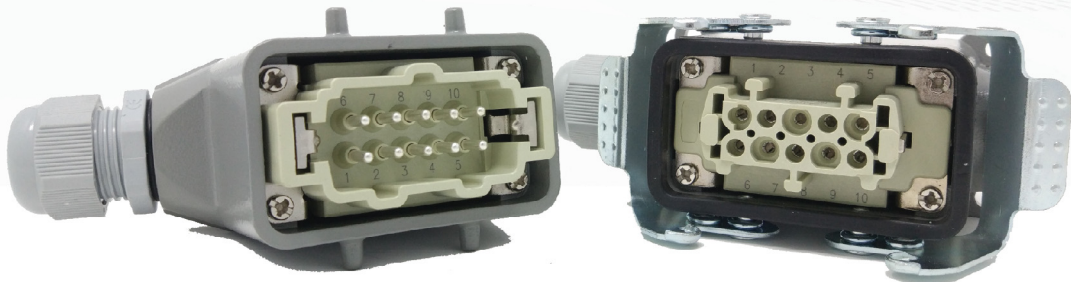
Model	Specification
JG - HE004	4 Pin Rectangle Metal Plug & Socket Bottom Open
JG - HE006	Side Open 6 Pin Metal Plug & Socket Bottom Open
JG - HE010	Side Open 10 Pin Metal Plug & Socket Bottom Open
JG - HE016	Side Open 16 Pin Metal Plug & Socket Bottom Open
JG - HE024	Side Open 24 Pin Metal Plug & Socket Bottom Open
JG - HE032	Side Open 32 Pin Metal Plug & Socket Bottom Open
JG - HE048	Side Open 48 Pin Metal Plug & Socket Bottom Open
JG - HE064	Side Open 64 Pin Metal Plug & Socket Bottom Open



HEAVY DUTY CONNECTOR

BOTTOM CLOSE TYPE

Model	Specification
JG - HE006	Side Closed 6 Pin Metal Plug & Socket Bottom Closed
JG - HE010	Side Closed 10 Pin Metal Plug & Socket Bottom Closed
JG - HE016	Side Closed 16 Pin Metal Plug & Socket Bottom Closed
JG - HE024	Side Closed 24 Pin Metal Plug & Socket Bottom Closed
JG - HE032	Side Closed 32 Pin Metal Plug & Socket Bottom Closed
JG - HE048	Side Closed 48 Pin Metal Plug & Socket Bottom Closed



HEAVY DUTY CONNECTOR

ROUND CONNECTOR MILITARY COLOUR

Model	Specification
JG - P2002	20mm 2Pin Round Metal Connector - Military Color
JG - P2003	20mm 3Pin Round Metal Connector - Military Color
JG - P2004	20mm 4Pin Round Metal Connector - Military Color
JG - P2005	20mm 5Pin Round Metal Connector - Military Color
JG - P2007	20mm 7Pin Round Metal Connector - Military Color
JG - P2804	28mm 4Pin Round Metal Connector - Military Color
JG - P2807	28mm 7Pin Round Metal Connector - Military Color
JG - P3212	32mm 12Pin Round Metal Connector-Military Color
JG - P3214	32mm 14Pin Round Metal Connector-Military Color
JG - P4820	48mm 20Pin Round Metal Connector-Military Color
JG - P4826	48mm 26Pin Round Metal Connector-Military Color
JG - P5530	55mm 30Pin Round Metal Connector-Military Color
JG - P5535	55mm 35Pin Round Metal Connector-Military Color



ROUND CONNECTOR STEEL COLOUR

Model	Specification
JG - TP2002	20mm 2Pin Round Metal Connector - Steel Color
JG - TP2003	20mm 3Pin Round Metal Connector - Steel Color
JG - TP2004	20mm 4Pin Round Metal Connector - Steel Color
JG - TP2007	20mm 7Pin Round Metal Connector - Steel Color
JG - TP2008	20mm 8Pin Round Metal Connector - Steel Color
JG - TP2010	20mm 10Pin Round Metal Connector - Steel Color
JG - TP2012	20mm 12Pin Round Metal Connector - Steel Color
JG - TP2808	28mm 8Pin Round Metal Connector - Steel Color
JG - TP2810	28mm 10Pin Round Metal Connector - Steel Color
JG - TP2812	28mm 12Pin Round Metal Connector - Steel Color
JG - TP2816	28mm 16Pin Round Metal Connector - Steel Color

