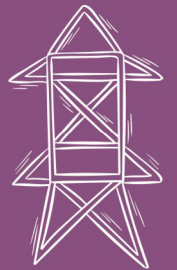
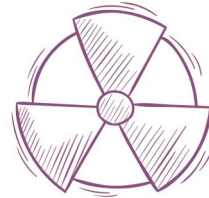
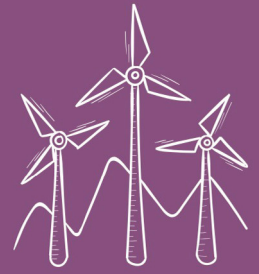
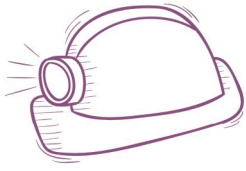


CONTROL & SWITCHGEAR



2018 - 2019
www.jigoindia.com



JiGO

POWER TO PERFORM

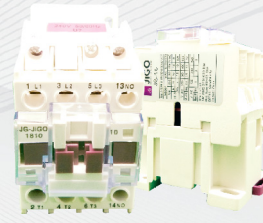
CONTACTOR - 3 POLE (AC)



JG-0910/01



JG-1210/01



JG-1810/01



JG-2510/01

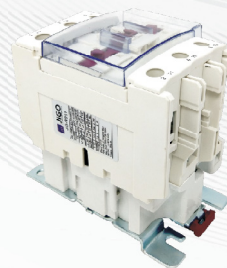


JG-3210/01



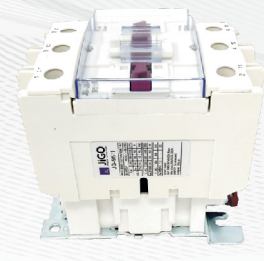
JG-5011

with moulded coil



JG-8011

with moulded coil



JG-9511

with moulded coil

Application

JG-JiGO series AC contactors are for use in the AC circuit up to the rated voltage 660V AC 50Hz or 60Hz rated current 95A, to connect or disconnect and frequent start/stop/control the AC motor. They can be combined together with auxiliary contact group, air delayer, mechanical interlocking contactors and etc, to constitute delayer, reversible contactor or star-triangle starter. They can also be organized into electro magnetic starter by combine with the thermal relay.

Specification

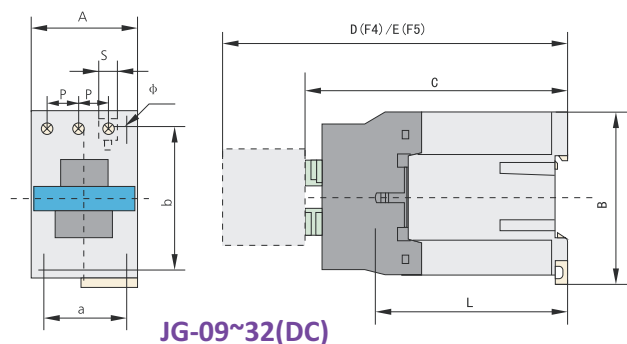
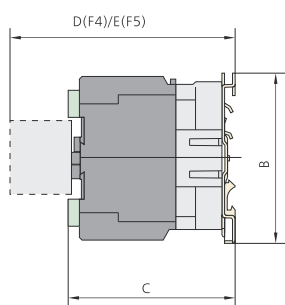
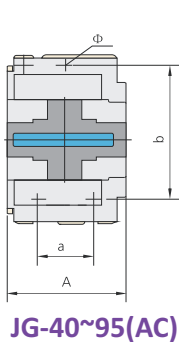
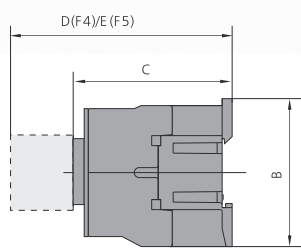
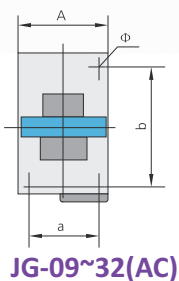
Type	JG0910 JG 0901	JG1210 JG1201	JG1810 JG1801	JG 2510 JG 2501	JG 3210 JG3201	JG 4011	JG 5011	JG 6511	JG 8011	JG 9511
Rated Insulation (V)	660	660	660	660	660	660	660	660	660	660
Conventional Thermal Current (A)	20	25	32	40	50	60	75	80	110	125
Rated operational current 380V/ac3	9	12	16	25	32	40	50	63	80	95
Controlled power (kw)	2.2	3	4	5.5		11	15	18.5	22	25
	4	5.5	7.5	11		18.5	22	30	37	45
	4	5.5	9	11		22	25	37	45	45
	4	5.5	9	11		22	30	37	45	45
	5.5	7.5	10	15		30	33	37	45	45
Install way	1. use 2 screws 2 use 35mm installation rail					1. use 3 screws 2. use 35mm or 75mm installation rail (with moulded coil)				

CONTACTOR - 3 POLE (DC)

DC VOLTAGE CONTACTOR

Items		Model	JG-DC0910	JG-DC1210	JG-DC1810	JG-DC2510	JG-DC3210
Frame			Frame 1		Frame 2	Frame 3	Frame 4
Rated conventional heating current (A) AC-1			20	20	32	40	50
Rated operational current (A)	380/400V	AC-3	9	12	18	25	32
		AC-4	3.5	5	7.7	8.5	12
	660/690V	AC-3	6.6	8.9	12	18	21
		AC-4	1.5	2	3.8	4.4	7.5
Conventional heating current (A)			20	20	32	40	50
Rated insulation voltage (V AC)			690	690	690	690	690
Power of controlled 3-phase cage motor (AC-3)	kW	220/230V AC	2.2	3	4	5.5	7.5
		380/400V AC	4	5.5	7.5	11	15
		660/690V AC	5.5	7.5	10	15	18.5
Operating frequency (operations/h)	Electrical	AC-3	1,200	1,200	1,200	1,200	600
		AC-4	300	300	300	300	300
	Mechanical		3,600	3,600	3,600	3,600	3,600
Electrical life ($\times 10^3$ operations)	AC-3		1,000	1,000	1,000	1,000	800
	AC-4		200	200	200	200	200
Mechanical life ($\times 10^6$ operations)			10	10	10	10	8
Matched fuse type			RT16-20	RT16-20	RT16-32	RT16-40	RT16-50

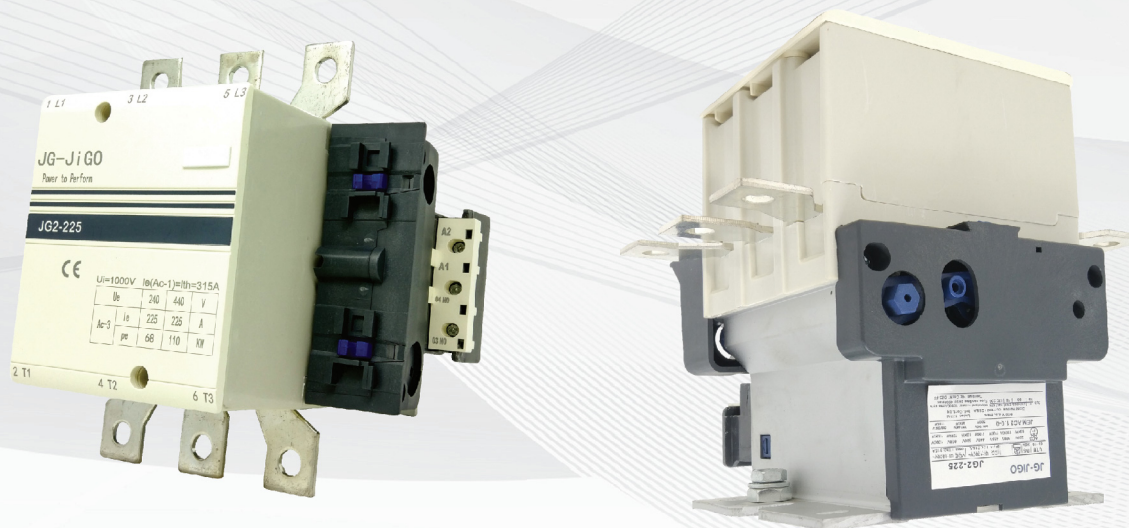
DIMENSIONS



Model	A max	B max	C max	D max	E max	a	b	Φ	L	P	S
JG-09(DC)~12(DC)	47	76	86(116)	120.5(154.5)	140.5(174.5)	34/35	50/60	4.5	60(95)	10.5	8.6
JG-18(DC)	47	76	87(122)	125.5(160.5)	145.5(180.5)	34/35	50/60	4.5	61(96)	11.3	10.4
JG-25(DC)	57	86	95(131)	133.5(169.5)	153.5(189.5)	40	48	4.5	70(107)	13.2	11.7
JG-32(DC)	57	86	100(138)	138.5(176.5)	158.5(196.5)	40	48	4.5	71.6(120)	14.5	13
JG-4011~6511	77	129	116(173)	154.5(211.5)	174.5(231.5)	40	105	6.5	78(135)	20	8.6
JG-8011~9511	87	129	127(188)	165.5(226.5)	185.5(246.5)	40	105	6.5	83(140)	23.5	12

CONTACTOR - 3 POLE (AC)

JG2 SERIES - POWER CONTACTOR



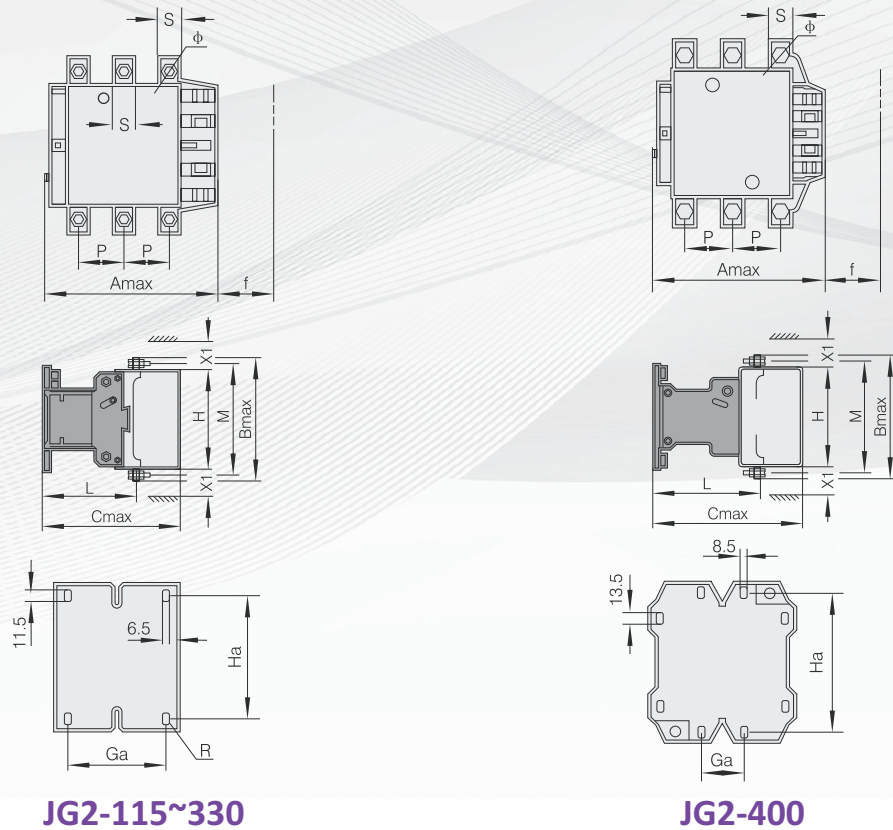
Structure features

- The contactor is composed of arc-extinguishing system, contact system, base frame and magnetic system (including iron core, coil)
- The Contact system of the contactor is of direct action type and double-breaking points allocation.
- The lower base-frame of the contactor is made of shapred aluminum alloy and the coil is of plastic enclosed structure.
- The coil is assembled with the armature to be an integrated one. They can be directly taken out from or inserted into contactor.
- It is convenient for user's service and maintenance.

Model			JG2-115	JG2-150	JG2-185	JG2-225	JG2-265	JG2-330	JG2-400
			FRAME 1		FRAME 2		FRAME 3	FRAME 4	FRAME 5
Rated Conventional heating current (A) AC-1			200	200	275	275	315	380	450
Rated operational current (A)	AC-3	380/400V AC	115	150	185	225	265	330	400
	AC-4	660/690V AC	86	108	118	137	170	235	303
Power of controlled 3-phase cage motor (AC-3)	kW	380/400V AC	55	75	90	110	132	160	200
		660/690V AC	80	100	110	129	160	220	280
	hp	240V AC	40	50	60	75	100	125	150
		415V AC	60	75	100	125	150	150	200
		480V AC	75	100	100	125	150	200	250
		600V AC	75	100	100	125	150	200	300
Operating cycles (operations /h) AC-3			1,200	1,200	600	600	600	600	600
Electrical life ($\times 10^6$ operations) AC-3			1.2	1.2	1	1	0.8	0.8	0.8
Mechanical life ($\times 10^6$ operations)			10	10	6	6	6	6	6

CONTACTOR - 3 POLE (AC)

JG2 SERIES - POWER CONTACTOR



JG2-115~330

JG2-400

Model	JG2-115	JG2-150	JG2-185	JG2-225	JG2-265	JG2-330	JG2-400
A	167	167	171	171	202	213	213
B	163	171	174	197	203	206	206
C	172	172	183	183	215	220	220
P	37	40	40	48	48	48	48
S	20	20	20	25	25	25	25
ϕ	M6	M8	M8	M10	M10	M10	M10
f	131	131	131	131	147	147	147
M	147	150	154	172	178	181	181
H	124	124	127	127	147	158	158
L	107	107	113.5	113.5	141	145	145
X1 200~500V	10	10	10	10	10	10	15
X1 660~1000V	15	15	15	15	15	15	20
Ga	80	80	80	80	96	96	80
Ha	110~120	110~120	110~120	110~120	110~120	110~120	170~180

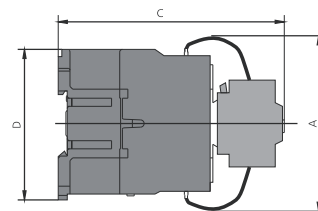
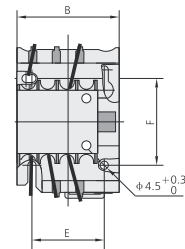
Note: a. f is the min distance needed to mount and dismount the coil.

b. X1: arcing distance is identified by operating voltage and breaking capacity.

CONTACTOR - 3 POLE CAPACITOR

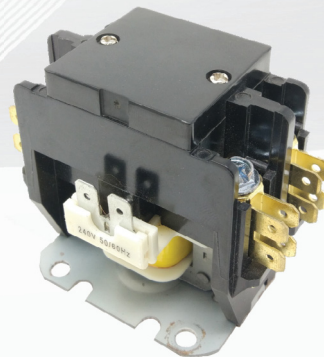
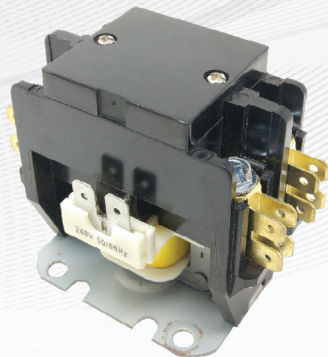


Item	JGCJ19-25	JGCJ19-32	
Controllable capacitor	220V	6	9
Capacity	380V	12	18
Rated Isolation Voltage U_i V	500		
Rated Operational Voltage U_e V	220/240, 380/400		
Conventional thermal current I_{th} A	25	32	
Rated Operational current I_e A (380V)	17	23	
Restrained surge capacity	20 I_e		
Controlled power voltage	110 127 220 380		
Auxiliary contact	AC-15: 360VA DC-13: 33W I_{th} : 10A		
Operating Frequency cycles/h	120		
Electrical durability 10^4	10		
Mechanical durability 10^4	100		



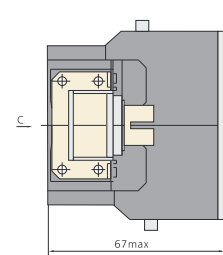
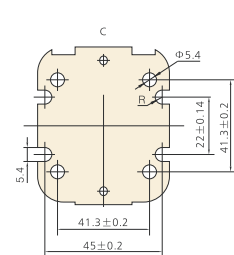
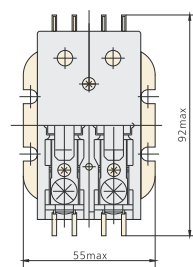
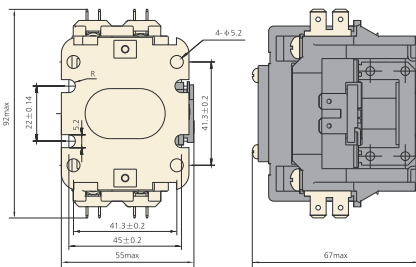
Model	Amax	Bmax	Cmax	Dmax	E	F	Note
JGCJ19-25	80	47	124	76	34/35	50/60	Not only fixed by screws but also could be fixed with 35mm din rail
JGCJ19-32	90	58	132	86	40	48	

CONTACTOR - 30A; AIR CON.



JG-30/1P

JG-30/2P



Coil rating	1 Pole contact				2 pole contact			
	24	120	208/240	277	24	120	208/240	277
Nominal coil voltage	24	120	208/240	277	24	120	208/240	277
Nominal coil resistance Ohms	18	420	1800	2500	11	237	1000	1600
Maximum pick up voltage	18	88	177	221	18	88	177	221
Maximum drop out voltage	06-15	20-70	40-140	50-165	06-15	20-70	40-140	50-165
Nominal rush Va@50Hz	31	31	31	31	33	33	33	33
Nominal rush Va@60Hz	28	28	28	28	30	30	30	30
Nominal rush Va@50Hz	6	6	6	6	8	8	8	8
Nominal rush Va@60Hz	5	5	5	5	6.5	6.5	6.5	6.5
Maximum coil voltage	30	132	264	300	30	132	132	300



CONTACTOR ACCESSORIES

ADD ON BLOCK

Model	Configuration of Contacts	
	NO Contact	NC Contact
JG-F4-11	1	1
JG-F4-20	2	0
JG-F4-02	0	2
JG-F4-22	2	2
JG-F4-31	3	1
JG-F4-13	1	3
JG-F4-40	4	0
JG-F4-04	0	4



ON DELAY TIMER

Model	Time delay range	configuration of time delay contacts
JG-F5-T2	0.1s-30s	N/O+N/C
JG-F5-T4	10s-180s	N/O+N/C



CONTACTOR ACCESSORIES

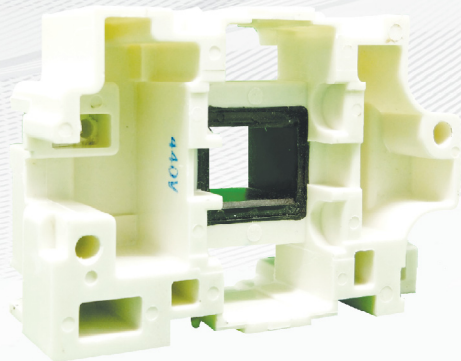
SPARE COIL



JG-02



JG-04



JG-06

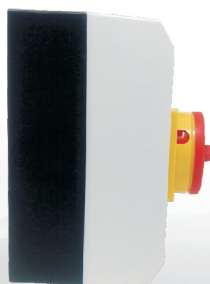
JG-02 FOR 09A/12A/18A CONTACTOR

JG-04 FOR 25A/32A CONTACTOR

JG-06 FOR 40A/50A/65A/80A/95A CONTACTOR

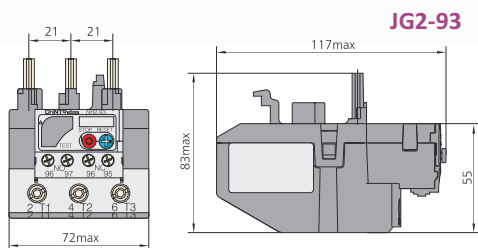
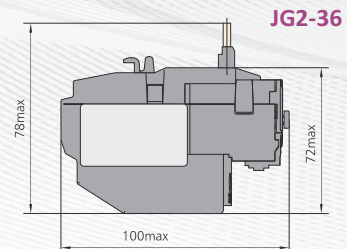
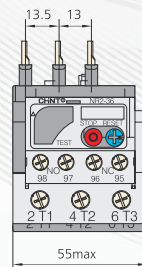
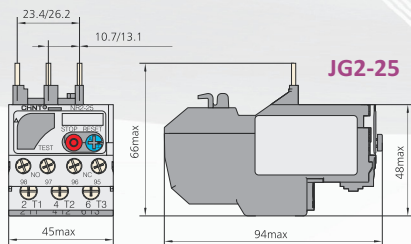
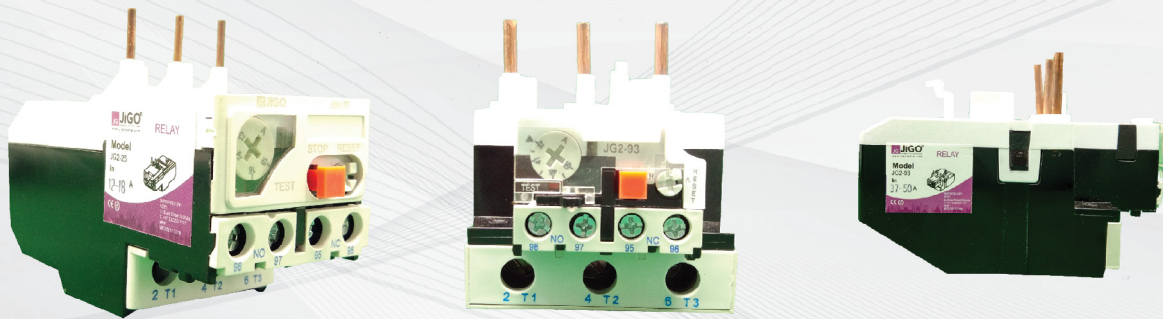
ON/OFF ISOLATOR

3/4P WITH ENCLOSURE

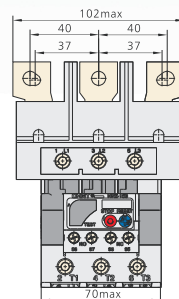


MODEL	SPECIFICATION
JG-20/3	20A 3 POLE
JG-32/3	32A 3 POLE
JG-32/4	32A 4 POLE
JG-40/4	40A 4 POLE
JG-63/4	63A 4 POLE

CONTACTOR RELAY



JG2-93



JG2-115

Model	JG2-25	JG2-36	JG2-93	JG2-115
Current class(A)	25	36	93	115
Phase failure protection function	Yes	Yes	Yes	Yes
Automatic & manual reset	Yes	Yes	Yes	Yes
Temperature compensation	Yes	Yes	Yes	Yes
Releasing indicator	Yes	Yes	Yes	Yes
Test & stop pushbutton	Yes	Yes	Yes	Yes
Mounting mode	Plug-in	Yes	Yes	Yes
	Independent	Yes	Yes	No
Auxiliary contacts	Configuration of contacts	1N/O+1N/C	1N/O+1N/C	1N/O+1N/C
	Rated current (A) (AC-15 220/230V)	2.73	2.73	2.73
	Rated current (A) (AC-15 380/400V)	1.58	1.58	1.58
	Rated current (A) (DC-13 220/230V)	0.2	0.2	0.2

FUSE

Cylindrical Fuse

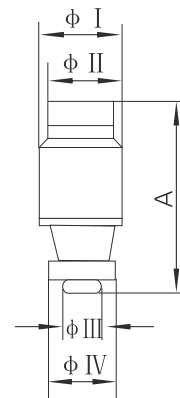
Model No	Description	Rated Voltage (V)	Rated current (A)	D×L
JG - CF-028	Cylindrical Fuse - 10x38	380/500	0.5~30	Φ10.3×38
JG - CF039	Cylindrical Fuse - 14x51 with indicator	380/500	0.5~63	Φ14.3×51
JG-CF040	Cylindrical Fuse - 14x51	380/500	0.5~63	Φ14.3×51
JG-CF042	Cylindrical Fuse - 22X58	380/500	10~125	Φ22.2×58



Bottle Fuse

Model No	Description	Rated Voltage (V)	Rated current (A)
JG - RO21	Bottle Fuse 2A - 25A	500	2~25
JG - RO22	Bottle Fuse 35A - 63A	500	35~63

Model	A	φ I	φ II	φ III
RO21-2, 4, 6A	50	21	14	6
RO21-8, 10A	50	21	13	8
RO21-16A	50	21	13	10
RO21-20A	50	21	13	12
RO21-25A	50	21	13	14
RO22-35, 40A	50	26	20	16
RO22-50A	50	26	20	18
RO22-63A	50	26	20	20



FUSE

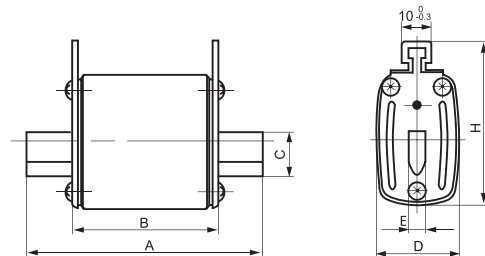
Cylindrical Fuse Base

Model No	Description	Applicable Fuse Link	Rated Insulation Voltage (V)	Rated Current (A)
JG - RT18-32(1)	10x38 Fuse Base 1 Pole	Φ10.3×38	500	32
JG - RT18-32(3)	10x38 Fuse Base 3 Pole	Φ10.3×38	500	32
JG - RT18-63(1)	14x51 Fuse Base 1 Pole	Φ14.3×51	500	63
JG - RT18-63(3)	14x51 Fuse Base 3 Pole	Φ14.3×51	500	63



HRC Fuse

Type	Rated Voltage (V)	Rated Current (A)	Dimension(mm)					
			A	B	D	E	H	C
JG - NT00C	AC500/690,DC250	4 to 100A	78	49	21	6	52.5	15
JG - NT00	AC500/690,DC250	4 to 160A	78	49	30	6	55.5	15
JG - NT01	AC500/690,DC250	80 to 250A	135	68	48	6	60	20
JG - NT02	AC500/690,DC250	125 to 400A	150	68	58	6	70	25
JG - NT03	AC500/690,DC250	315 to 630A	150	68	67	6	82	32



RESIDUAL CURRENT CIRCUIT BREAKER

General

The residual current circuit breaker (RCCB) is approved by BIS as per IS 12640(Pt-1):2008. Residual current circuit breakers are used in housing, tertiary sector and industry.

Function

Protection against Electrocutation (indirect contacts or direct contacts)
Protection against Fire hazard

Tripping sensitivity

30mA - additional protection against direct contact.
100mA - co-ordinated with the earth system according to the formula $L\Delta n < 50/R$, to provide protection against indirect contacts;
300mA - protection against indirect contacts, as well as fire hazard.

Tripping time

It is instantaneous. It ensures instantaneous tripping (without time-delay).



Model No.	JG-R001
Number of poles	1 P+N (2P), 3P+N (4P)
Rated Voltage(Un)	2P:240V 4P: 415V
Rated Current(In)	16A,25A,32A,40A, 63A
Rated frequency	50/60 Hz
Type	AC
Rated residual operating current(In)	30mA, 100mA,300mA
Rated insulation voltage(Ui)	415V
Rated impulse withstand voltage (Uimp)	4KV
Utilisation range temperature	-5°C to 40°C
Storage temperature	-25°C to 70°C
Rated making and breaking capacity (Im)	500A for models 16A, 25A, 32A and 40A 630A for model 63A
Rated residual making and breaking capacity(LΔm)	500A for models 16A, 25A, 32A and 40A 630A for model 63A
Rated conditional short-circuit current (Inc)	6000A
Rated conditional residual short-circuit current(ILL.c)	6000A
Residual current off-time	~0.1s
Terminal protection degree	IP20
Endurance	>=4000
Method of mounting	on rail

